



CorePro LED PLS



CorePro LED PLS 5W 840 2P G23

The Philips CorePro LED PLS integrates a LED light source into a traditional fluorescent form factor. This product is the ideal solution for uplampping in general lighting applications: it meets basic lighting requirements, offers significant energy savings, and is environment-friendly.

Product data

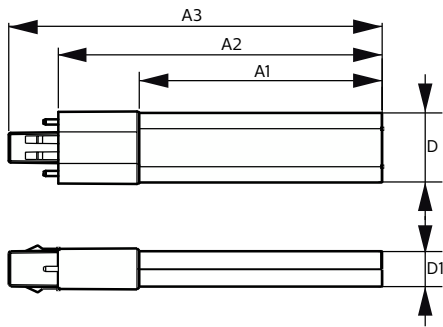
General Information		Input Frequency	
Cap-Base	G23	Input Frequency	50 to 60 Hz
Nominal lifetime	30,000 hour(s)	Power Consumption	5 W
Switching Cycle	50,000	Starting Time (Nom)	0.5 s
Lighting Technology	LED	Warm-up time to 60% light	0.5 s
Flux measurement reference	Sphere	Power Factor (Fraction)	0.9
CE mark	Yes	Voltage (Nom)	220-240 V
EU RoHS compliant	Yes	LED alternative to fluorescent lamp power	11 W
		Inrush current at mains	3
		Max. lamp no. on MCB B type 10A - Mains	159
		Max. lamp no. on MCB B type 10A – EM ballast without Comp. Cap.	220
		Max. lamp no. on MCB B type 10A – EM ballast with Comp. Cap.	30
		Max. lamp no. on MCB B type 16A - Mains	306
		Max. lamp no. on MCB B type 16A – EM ballast without Comp. Cap.	330
		Max. lamp no. on MCB B type 16A – EM ballast with Comp. Cap.	49
		Ballast Compatibility	EM
Light Technical		Temperature	
Color Code	840 [CCT of 4000K]	Ambient temperature range	-20 °C to 45 °C
Beam Angle (Nom)	120 degree(s)		
Luminous Flux	550 lm		
Color Designation	Cool White (CW)		
Correlated Color Temperature (Nom)	4000 K		
Luminous Efficacy (rated) (Nom)	110.00 lm/W		
Color Consistency	<6		
Color rendering index (CRI)	82		
LLMF At End Of Nominal Lifetime (Nom)	70 %		
Photobiological safety according to EN 62471	RG0		
Operating and Electrical			
Line Frequency	50 to 60 Hz		

CorePro LED PLS

T-Case Maximum (Nom)	83 °C
Controls and Dimming	
Dimmable	No
Mechanical and Housing	
Bulb Material	Plastic
Product Length	170 mm
Bulb Shape	PL-S
Approval and Application	
Energy Efficiency Class	F
Energy Saving Product	Yes
Approval Marks	TUV CE marking RoHS compliance KEMA Keur certificate

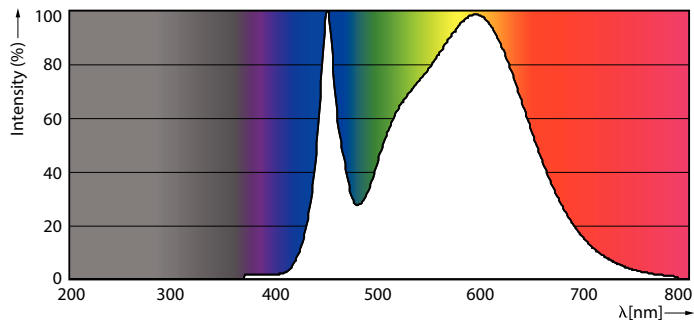
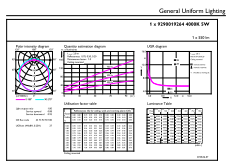
Energy Consumption kWh/1000 h	5 kWh
EPREL Registration Number	403567
Product Data	
Order product name	CorePro LED PLS 5W 840 2P G23
Full product name	CorePro LED PLS 5W 840 2P G23
Full product code	871869959668200
Order code	929001926402
Material Nr. (12NC)	929001926402
Numerator - Quantity Per Pack	1
EAN/UPC - Product/Case	8718699596682
Numerator - Packs per outer box	20
EAN/UPC - Case	8718699596699

Dimensional drawing



Product	D	D1	A1	A2	A3
CorePro LED PLS 5W 840 2P G23	31.1 mm	15.8 mm	108 mm	144 mm	166 mm

Photometric data

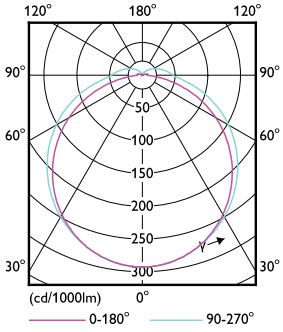


General uniform lighting - CorePro LED PLS 5W 840 2P G23

Spectral Power Distribution Colour - CorePro LED PLS 5W 840 2P G23

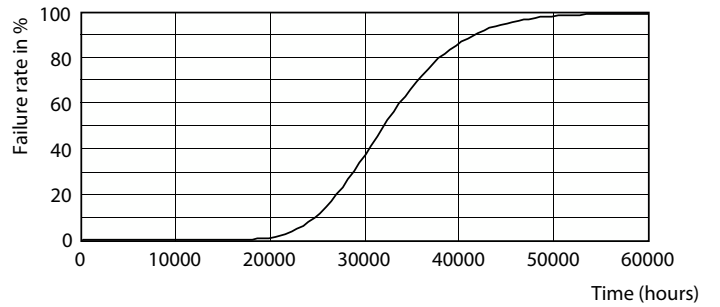
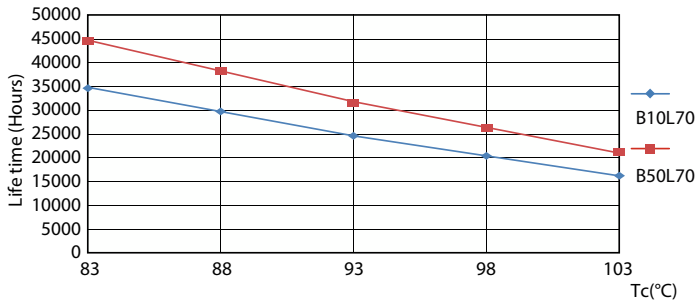
CorePro LED PLS

Photometric data



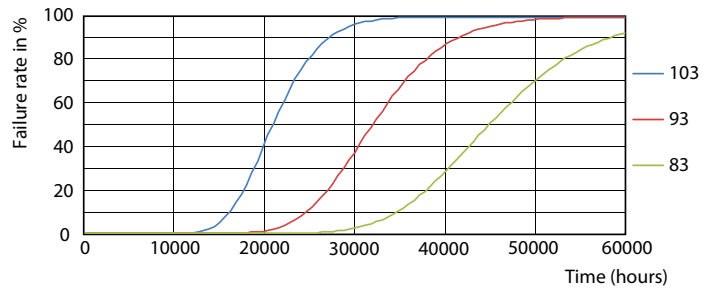
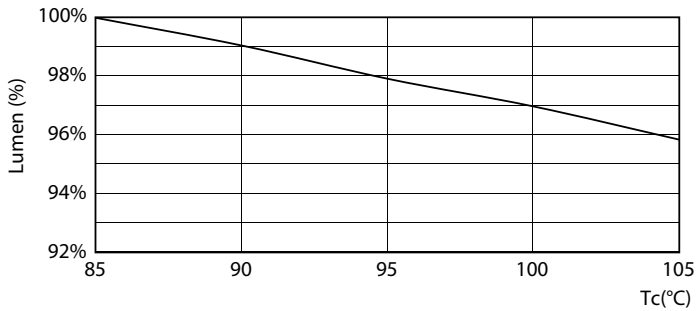
Light Distribution Diagram - CorePro LED PLS 5W 840 2P G23

Lifetime



Life Expectancy Diagram - CorePro LED PLS 5W 840 2P G23

Life Expectancy Diagram - CorePro LED PLS 5W 840 2P G23

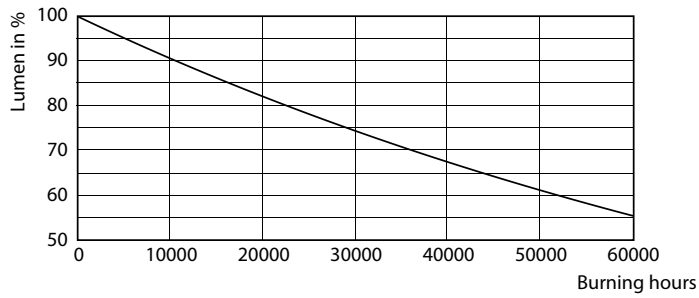


Lumen Maintenance Diagram - CorePro LED PLS 5W 840 2P G23

Life Expectancy Diagram - CorePro LED PLS 5W 840 2P G23

CorePro LED PLS

Lifetime



Lumen Maintenance Diagram - CorePro LED PLS 5W 840 2P G23

